

TEST

01

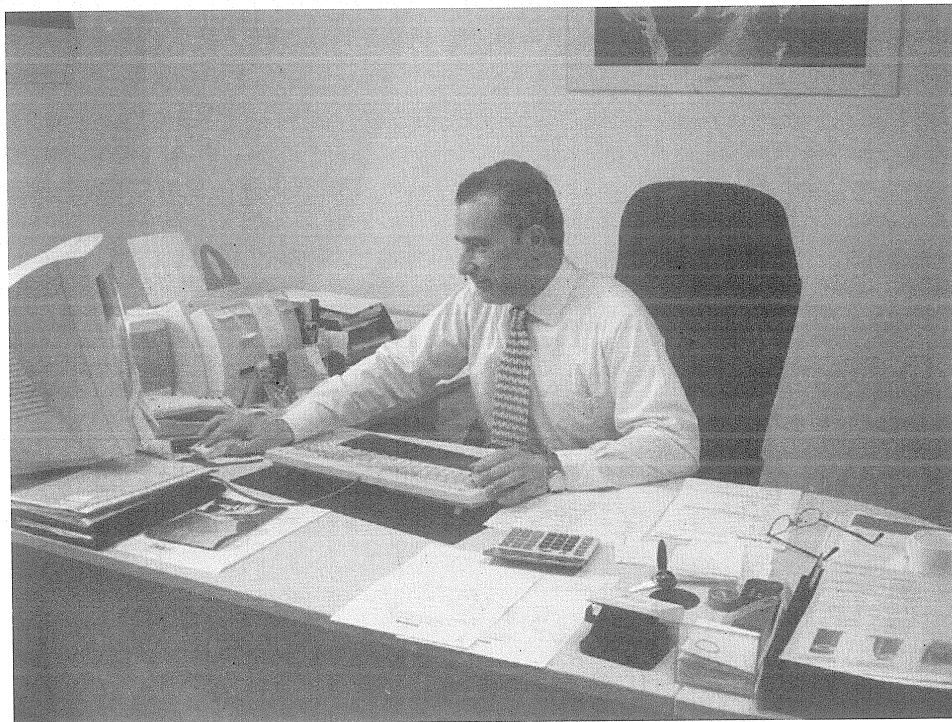
LISTENING TEST

In the Listening test, you will be asked to demonstrate how well you understand spoken English. The entire Listening test will last approximately 45 minutes. There are four parts, and directions are given for each part. You must mark your answers on the separate answer sheet. Do not write your answers in the test book.

PART 1

Directions: For each question in this part, you will hear four statements about a picture in your test book. When you hear the statements, you must select the one statement that best describes what you see in the picture. Then find the number of the question on your answer sheet and mark your answer. The statements will not be printed in your test book and will be spoken only one time. Look at the example item below.

Example



Statement (B), "The man is working at the desk." is the best description of the picture, so you should select answer (B) and mark it on your answer sheet.

1.

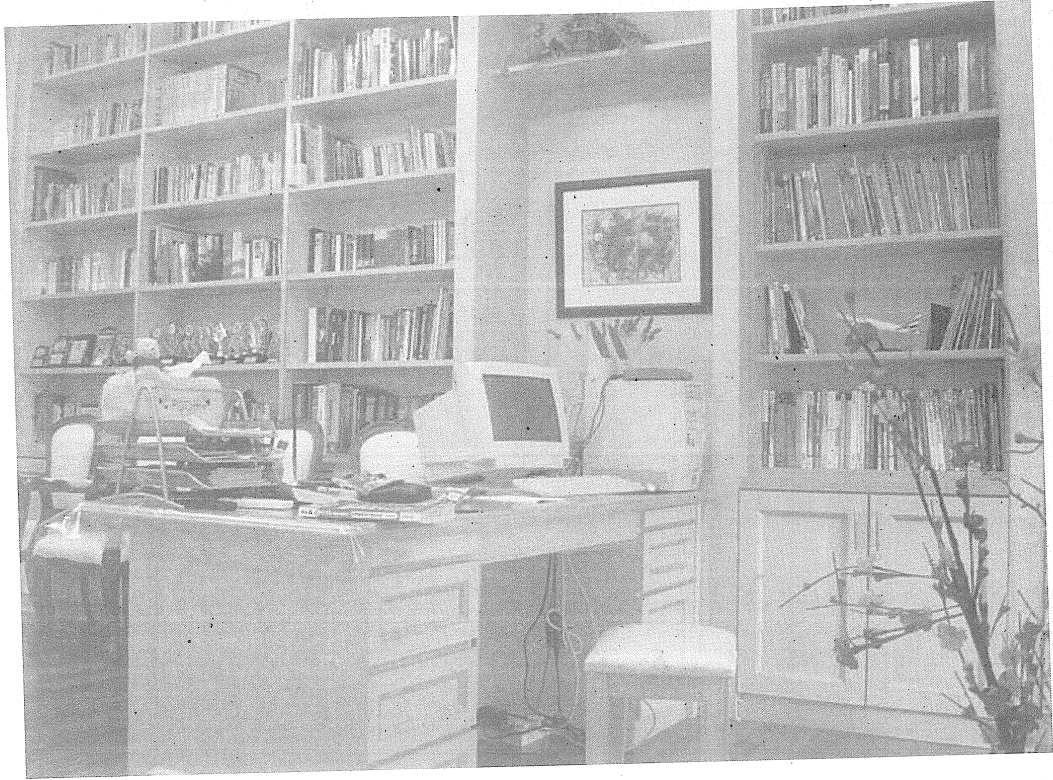


2.



GO ON TO THE NEXT PAGE 

3.



4.



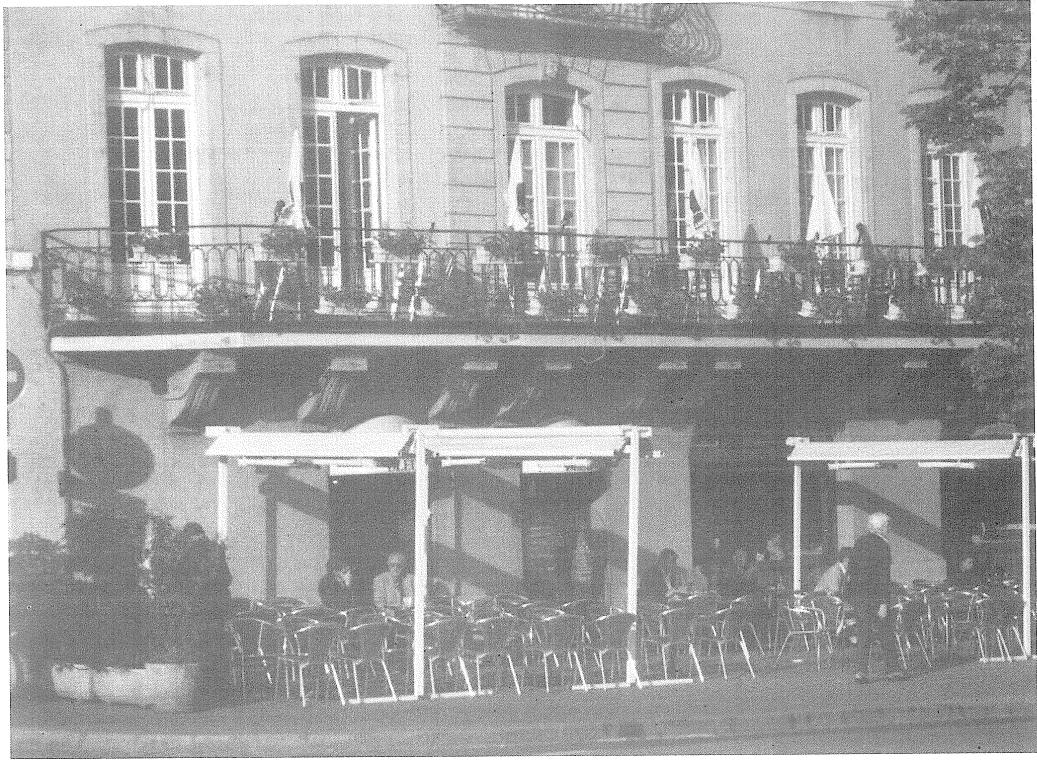
5.



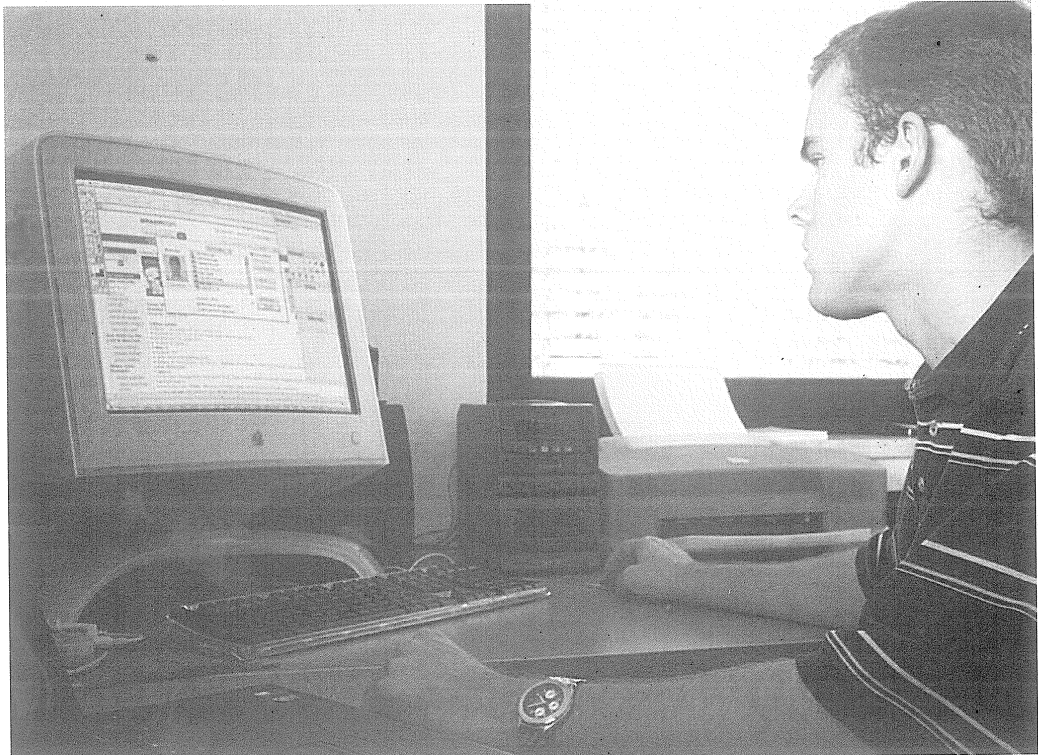
6.



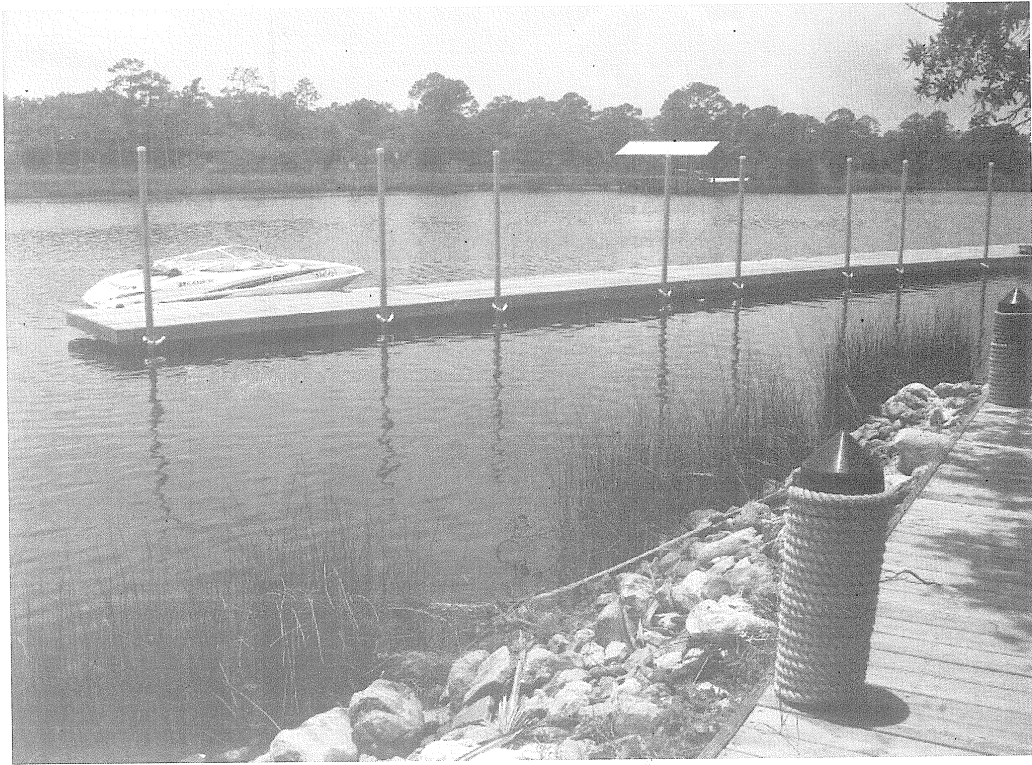
7.



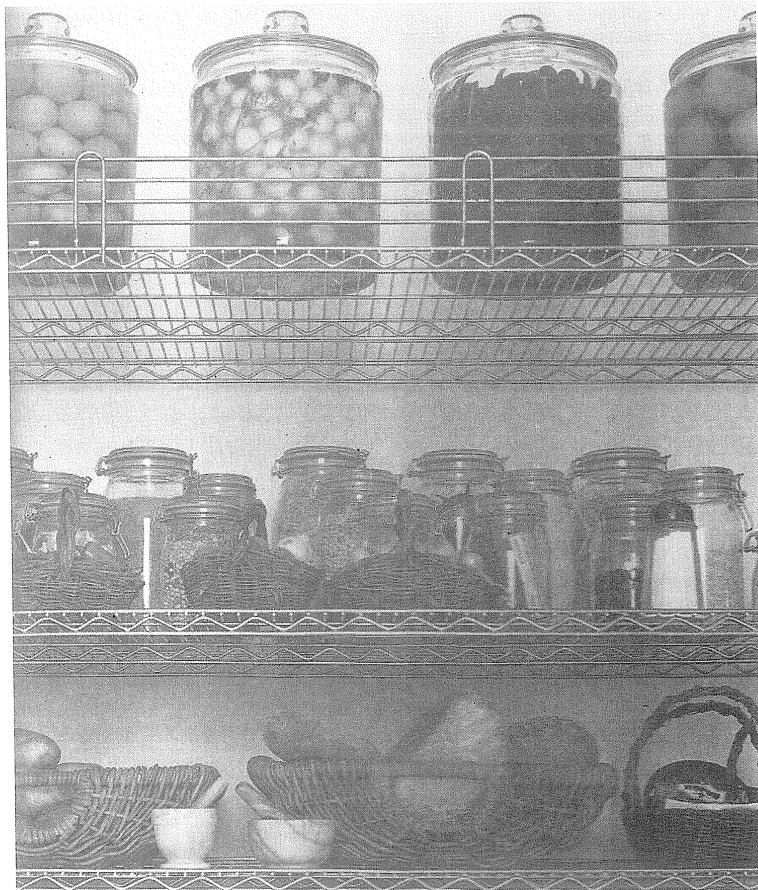
8.



9.



10.



PART 2

Directions: You will hear a question or statement and three responses spoken in English. They will be spoken only one time and will not be printed in your test book. Select the best response to the question or statement and mark the letter (A), (B), or (C) on your answer sheet.

Example

You will hear: . . . Where is the meeting room?

You will also hear: (A) To meet the new director.

(B) It's the first room on the right.

(C) Yes, at two o'clock.

The best response to the question "Where is the meeting room?" is choice (B), "It's the first room on the right," so (B) is the correct answer. You should mark answer (B) on your answer sheet.

11. Mark your answer on your answer sheet.
12. Mark your answer on your answer sheet.
13. Mark your answer on your answer sheet.
14. Mark your answer on your answer sheet.
15. Mark your answer on your answer sheet.
16. Mark your answer on your answer sheet.
17. Mark your answer on your answer sheet.
18. Mark your answer on your answer sheet.
19. Mark your answer on your answer sheet.
20. Mark your answer on your answer sheet.
21. Mark your answer on your answer sheet.
22. Mark your answer on your answer sheet.
23. Mark your answer on your answer sheet.
24. Mark your answer on your answer sheet.
25. Mark your answer on your answer sheet.
26. Mark your answer on your answer sheet.
27. Mark your answer on your answer sheet.
28. Mark your answer on your answer sheet.
29. Mark your answer on your answer sheet.
30. Mark your answer on your answer sheet.
31. Mark your answer on your answer sheet.
32. Mark your answer on your answer sheet.
33. Mark your answer on your answer sheet.
34. Mark your answer on your answer sheet.
35. Mark your answer on your answer sheet.
36. Mark your answer on your answer sheet.
37. Mark your answer on your answer sheet.
38. Mark your answer on your answer sheet.
39. Mark your answer on your answer sheet.
40. Mark your answer on your answer sheet.

PART 3

Directions: You will hear some conversations between two people. You will be asked to answer three questions about what the speakers say in each conversation. Select the best response to each question and mark the letter (A), (B), (C), or (D) on your answer sheet. The conversations will be spoken only one time and will not be printed in your test book.

- 41. Who most likely are they?**
- (A) A job candidate and an interviewer.
 - (B) A marketing manager and a personnel manager.
 - (C) Co-workers who work in the same department of a company.
 - (D) A client and a shop employee.
- 42. Why is the man reluctant to transfer to another department?**
- (A) He is happy with his current job.
 - (B) He feels that he is not qualified for the open position.
 - (C) He doesn't like the people in the Marketing Department.
 - (D) He would have to accept a pay cut if he got hired.
- 43. What will the man probably do?**
- (A) Put in his application and face the outcome.
 - (B) Talk to his boss about getting more details about the position.
 - (C) Disregard the opportunity and wait for another time.
 - (D) Work harder to be considered for the next promotion.
- 44. Who is the woman?**
- (A) A visitor.
 - (B) A building security guard.
 - (C) A parking attendant.
 - (D) An artist.
- 45. What suggestion does the woman receive from the man?**
- (A) See the art exhibit.
 - (B) Park in the underground garage.
 - (C) Turn back and drive down to the intersection.
 - (D) Walk back to her house.
- 46. What will the woman most likely do?**
- (A) Drive back home.
 - (B) Buy a ticket to the exhibit.
 - (C) Pay for the towing fee.
 - (D) Park her car somewhere else.

47. What is the man doing?

- (A) Arguing about the seat.
- (B) Searching for the right spot.
- (C) Trying to catch fish.
- (D) Moving to a different house.

48. How long has the man been here?

- (A) 15 minutes.
- (B) 30 minutes.
- (C) 60 minutes.
- (D) 120 minutes.

49. What does the woman suggest may be the reason for the man's problem?

- (A) He is sitting in the wrong place.
- (B) He is using the wrong bait.
- (C) He has been waiting too long.
- (D) He is not thinking properly.

50. What is the man doing?

- (A) He is trying to buy some clothing.
- (B) He is looking for a bank.
- (C) He is preparing to start a business.
- (D) He is serving a customer.

51. Where will the man most likely go next?

- (A) To another store.
- (B) To the back part of the store.
- (C) To a fashion show.
- (D) To see a customer.

52. What is special about this place?

- (A) The items are reasonably priced.
- (B) It is located close to the man's place.
- (C) It carries items that other stores don't have.
- (D) It has been in business for many years.

53. What is the man asking the woman about?

- (A) An error made in his paycheck.
- (B) A warning he had received at work.
- (C) The lunch menu at a restaurant he wants to go to.
- (D) A notification of an unpaid bill.

54. What will the man do?

- (A) Drop by the bank.
- (B) Take care of a misunderstanding.
- (C) Call another electrician.
- (D) Go on an errand.

55. When was the bill taken care of?

- (A) Wednesday.
- (B) Thursday.
- (C) Friday.
- (D) This morning.

56. When will the exhibition be held?

- (A) On the third of this month.
- (B) At the end of October.
- (C) In a couple of weeks.
- (D) After three days.

57. How long does it take to send the items to the Detroit plant?

- (A) One day.
- (B) Two days.
- (C) Three days.
- (D) Five days.

58. According to the woman, why is the delivery being rushed?

- (A) To have plenty of time to deal with a problem if one occurs.
- (B) To prepare for the company's move.
- (C) To avoid running into the possibility of a stock shortage.
- (D) To oblige the demand of Mr. Johnson.

59. How far did the man's team go in the tournament?
- (A) They reached the finals before getting defeated.
- (B) They got into the semifinals after beating the sales team.
- (C) They were defeated in the first round of the tournament.
- (D) They went all the way to the finals and won.
60. According to the woman, why did her team not compete in the tournament?
- (A) Many of her staff members were out of town on business.
- (B) Her boss does not like baseball very much.
- (C) She fell down the stairs and broke her ankle.
- (D) Her team members were too busy with work.
61. What does the man mention about some of the managers in the company?
- (A) They don't consider company morale to be very important.
- (B) They stress winning the tournament too much.
- (C) They worked very hard preparing for the tournament.
- (D) They waste too much time talking about sports.
-
62. According to the woman, why has the company gone over its budget this quarter?
- (A) Many employees are making unnecessary trips.
- (B) The staff members are staying at very expensive hotels.
- (C) Their travel expenses have shot up.
- (D) The cost of insurance has more than doubled.
63. What does the man suggest they do to solve the problem?
- (A) Have more people work from their homes.
- (B) Discriminate against those planning to travel.
- (C) Work out a better deal with the airline company.
- (D) Get the workers to pay for their own meals.
64. What does the woman say is the reason why the man's suggestion won't work?
- (A) People tend to get lazy working at home.
- (B) The management cannot judge which trips are absolutely necessary.
- (C) They are already getting a special rate from the airline company they deal with.
- (D) The rest of the managers at the company don't think it's a good idea.
65. Where is the conversation most likely taking place?
- (A) At an auto repair shop.
- (B) At a gas station.
- (C) In a computer store.
- (D) Alongside a freeway.
66. What does the woman say is the problem?
- (A) Her computer is down.
- (B) The car ignition doesn't work.
- (C) The car uses too much gas.
- (D) Her brother doesn't give good advice.
67. What advice does the man give her?
- (A) Listen to her brother.
- (B) Get a new car.
- (C) Have the car towed.
- (D) Replace the battery.
-
68. For how many nights will the man stay at the hotel?
- (A) One.
- (B) Two.
- (C) Three.
- (D) Seven.
69. What did the man request?
- (A) Room service.
- (B) A wake-up call.
- (C) Valet parking.
- (D) Cleaning service.
70. What will the man most likely be doing at 9 in the morning?
- (A) Giving a speech.
- (B) Having a meal.
- (C) Swimming in the lake.
- (D) Taking a flight out.

PART 4

Directions: You will hear some short talks given by a single speaker. You will be asked to answer three questions about what the speaker says in each short talk. Select the best response to each question and mark the letter (A), (B), (C), or (D) on your answer sheet. The talks will be spoken only one time and will not be printed in your test book.

71. On which day does this message take place?

- (A) Saturday.
- (B) Monday.
- (C) Friday.
- (D) Tuesday.

72. Why is the caller getting this message?

- (A) All the lines are busy.
- (B) It is a national holiday.
- (C) Everyone is out to lunch.
- (D) It is after working hours.

73. What should those who wish to make a change in their service do?

- (A) Stay on the line.
- (B) Call back another time.
- (C) Press a button on the phone.
- (D) Talk to an operator.

74. Who would most likely be listening to this talk?

- (A) Teachers at local schools.
- (B) Community residents.
- (C) Students from out of town.
- (D) Entertainers.

75. How often will the class mentioned be held?

- (A) Once a week.
- (B) Twice a week.
- (C) Three times a week.
- (D) Every day.

76. What are those interested in the class asked to do?

- (A) Sign up today at the community center.
- (B) Speak with the coordinators after the talk.
- (C) Deposit a check into the bank account.
- (D) Take an admissions test after the talk.

77. What does the speaker mention is special about Mr. Rowe?

- (A) He is the youngest person to head a company.
- (B) He has followed in the footsteps of his great father.
- (C) He made a lot of money by investing in stocks.
- (D) He is related to the company president.

78. Who does Sam credit his success to?

- (A) Mr. Smith.
- (B) One of the investors.
- (C) The company CEO.
- (D) His father.

79. What will Mr. Rowe talk about?

- (A) How to get in on the good investments.
- (B) How to make good business contacts.
- (C) How to climb up the corporate ladder.
- (D) How to become optimistic about work.

80. What is the purpose of the speech?

- (A) To invite people to a charitable function.
- (B) To introduce the next speaker.
- (C) To give thanks for the donations.
- (D) To announce an upcoming event.

81. Who is Mr. Gieane?

- (A) A Barrie County resident.
- (B) The mayor of Barrie County.
- (C) A government worker.
- (D) The president of a paint company.

82. According to Gus's report, what is considered to be most harmful to the environment?

- (A) Toxic sprays.
- (B) Secondhand smoke.
- (C) Gas fumes.
- (D) Toxic chemicals.

83. What is the purpose of the announcement?

- (A) To invite staff members to a company event.
- (B) To call for an emergency meeting.
- (C) To notify employees of future repair work on the elevator.
- (D) To guide the listeners to safety.

84. What does the speaker ask the listeners to do?

- (A) Immediately speak to their supervisors.
- (B) Take the elevator up to the tenth floor.
- (C) Walk patiently out of the building.
- (D) Read through the safety manual.

85. When should a listener talk to the boss?

- (A) If someone is not present.
- (B) Right after the announcement.
- (C) Before the end of the day.
- (D) The first thing in the morning.

86. What is the store celebrating?

- (A) The opening of a new store.
- (B) A record year for sales.
- (C) The retirement of a staff member.
- (D) An important anniversary.

87. When does the sale begin?

- (A) Today.
- (B) Friday.
- (C) Saturday.
- (D) Sunday.

88. When does the store open this Saturday?

- (A) 6 a.m.
- (B) 7 a.m.
- (C) 8 a.m.
- (D) 9 a.m.

89. When will the construction start?

- (A) January 15.
- (B) January 25.
- (C) March 15.
- (D) March 25.

90. According to the speaker, who will be mostly affected by the construction?

- (A) Sales staff.
- (B) Receptionists.
- (C) Customers.
- (D) Staff members without cars.

91. Which of the following is NOT mentioned by the speaker?

- (A) All staff members should park in a specific place.
- (B) Some of the employees should commute by bus.
- (C) People who live close to the office should share a ride.
- (D) Sales reps should speak with the receptionist.

92. What is causing the flight delays at Heathrow Airport?

- (A) A flight accident.
- (B) The local weather.
- (C) A security alert.
- (D) The overbooking of flights.

93. When was the flight originally scheduled for take-off?

- (A) 12 o'clock.
- (B) 2 o'clock.
- (C) 5 o'clock.
- (D) 7 o'clock.

94. What is being offered to the passengers at the second floor lounge?

- (A) A meal.
- (B) Accommodations.
- (C) Snacks and drinks.
- (D) Flight tickets..

95. What is the speaker doing?

- (A) Giving out an award.
- (B) Introducing a guest.
- (C) Making a sales presentation.
- (D) Conducting an interview.

96. What does the speaker say is in plan for Codak in the early part of next year?

- (A) They will buy out a Japanese company.
- (B) They will shut down one of their factories.
- (C) They will embark on a business partnership.
- (D) They will merge with another company.

97. Which of the following is NOT true about Codak Incorporated?

- (A) It has over 100,000 employees.
- (B) The company started a decade ago.
- (C) It has a branch office in Japan.
- (D) The company is planning to add more plants.

98. What is being advertised?

- (A) A travel agency.
- (B) A getaway resort.
- (C) A fitness center.
- (D) A restaurant.

99. What does the speaker say about The Adonis and Aphrodite Paradise?

- (A) It is visited by many travelers.
- (B) There are over 500 rooms.
- (C) Famous people vacation there.
- (D) It is situated near an ocean.

100. Which of the following is NOT part of the amenities offered?

- (A) An animal show.
- (B) Great cuisine.
- (C) A swimming pool.
- (D) Cycling.

advertisement
(pronounced)

amenities
→ (pronounced)